



# **Curing Cabinet for Concrete and Cement samples**

Standards: ASTM C511, ASTM C109, EN 196-1



**Please read this instruction before moving and installing this machine and attempting to run it.**

- **Check out any accessories you have received with your packing list which are electrical control box and its steel stand.**
- **This machine generates sound.**
- **The machine should be leveled.**
- **The power supply should be connected to earth wire (Ground) for electrical shock proofing. 220V,50/60Hz.**

## **Contents**

- 1- Introduction**
- 2- Specifications and Accessories of Hardware**
- 3- Schematic Drawing**
- 4- Electrical Diagram**
- 5- How to install the Curing Cabinet properly.**
- 6- Prepare the Curing Cabinet before starting.**
- 7- How to put the samples for curing**
- 8- Regularly cleaning the machine after process completion**
- 9- Maintenance and Service life**
- 10- Troubleshooting**

## 1- Brief Introduction of Curing Cabinet:

**Control designs and manufactures Ideal for curing cement specimens in commercial and site laboratories, very practical and easy to use. The frame is made of heavy-duty structure with two side transparent viewing glass, which is chemical resistant and particularly suitable for cement and concrete applications. The front doors are fitted with transparent viewing glass. The humidity is maintained from ambient up to 95%  $\pm$  3%. The temperature range is 15-40 °C, can be maintained to 20 $\pm$ 1°C by an immersion heater.**

**The three stainless steel racks of the internal frame can support the molds with specimens and many cement prisms. It can also be used to cure concrete cubes and other mortar specimens. Putting samples in plastic or s. steel pans is also possible to cure specimens in water.**

**Monitoring and control of both heating and cooling functions are performed with great accuracy, and achieves typical temperature stability of  $\pm$ 1°C. The LED digital display allows the temperature performance to be easily verified. A digitally set over temperature safety cut-out is fitted to all models.**

## **2- Specifications of software and technical data:**

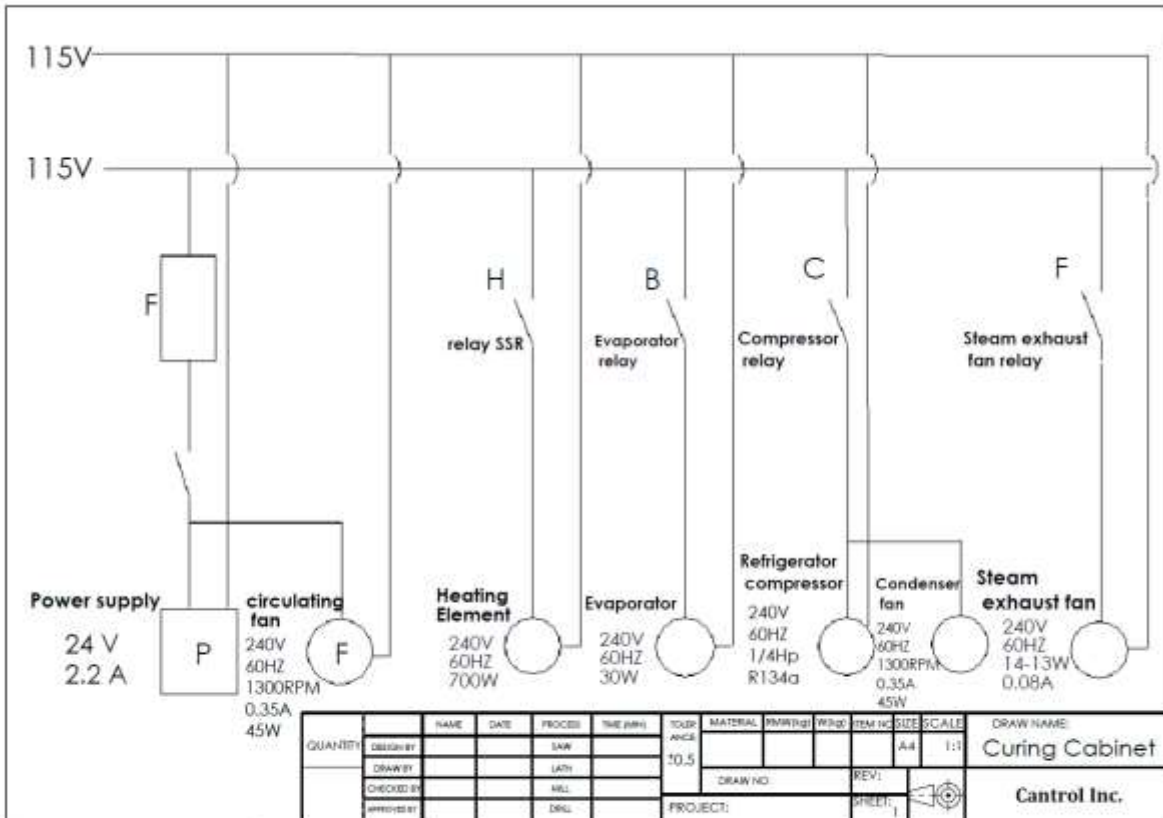
- 1– Cooling condensing system, plus heater element, humidifier and circulating fan.**
- 2– Comes with three stainless steel adjustable shelves.**
- 3- Heavy duty PVC structure, double isolated viewing glass.**
- 4- Digital 4x8 big display controller**
- 5– Temperature range of 15-40 degree Celsius**
- 6– Humidity range of 40-95%**
- 7- Circulating fan**
- 8– Fitted 750 W, Heater element.**
- 9– Condensing unit, 1/4 Hp.**
- 10- Model: 2220011, 1200 W, 220V, 60Hz, 1Ph, Model: 2220012, 12000W, 220V, 50Hz, 1Ph**
- 11- Dimension: 850X650X1900mm**
- 12- Weight: 140kg**

### 3-Schematic Drawing:

ITEM NO.	PART NUMBER	Material	QTY.
1	Steel Base	ST	1
2	PVC Structure	PVC	1
3	PVC Glass Door	PVC	1
4	Controller stand	ST	1
6	Controller	ST	1
6	Evaporator		1
7	Humidifier		1
8	Condensing Unit (Cooling Compressor)		1
9	Emergency Cut Off		1

QUANTITY	DESIGN BY	NAME	DATE	PROCESS	TIME (min)	TOLERANCE	MATERIAL	MM (kg)	W (kg)	ITEM NO.	SIZE	SCALE	DRAW NAME
1						±0.5					A4	1:20	Curing Cabinet
	DRAWN BY			LATH			DRAW NO.			REV.			
	CHECKED BY			MIL			PROJECT:			SHEET:	1		Control Inc.
	APPROVED BY			DRIL									

### 3- Electric Drawing:



The items come with the machine:

- 1- Controller Digital Display
- 2- Steel Stand for Digital Display
- 3- Three S.Steel Shelves

The most important things you should do before starting machine:

- 1- Install the machine at a level position.

- 2- Check out the water level in the Humidifier.
- 3- Make sure the sensors plug are in the back of the display.
- 4- Use a small container to gather the stilled water coming from the Evaporator of curing cabinet.

### **How to start the machine:**

- 1- Plug in machine to the 220V, 50/60Hz.socket regarding to model of machine.
- 2- Check out the level of distilled water in humidifier.
- 3- Set the desired temperature and humidity of chamber regarding the test method.
- 4- Put the samples inside the chamber and close the door.
- 5- Start the machine and wait for around an hour for Temp. and Humd. to be stabled.
- 6- The temp. will fluctuate between 1°C and humidity will fluctuate between 3%.
- 7- Don to open the door during the test if you don't need.

## **Maintenance of machine:**

**1-Check out the level of distilled water of humidifier regularly.**

**The humidifier works for a week if the water is full.**

**2- make sure that the sensors plug is connected to the back of the display.**

**In any case, if the sensors fail, the cut off safety switch will cut off the curing for overheating, so the red signal lamp will be on, it shows that the sensors may be disconnected or failed and should be replaced.**

**Feel free to contact us if you have any questions or concerns.**

**INFO@CANTROL.CA**



